

# VINCENTwrist

Wrist joints for Vincent prostheses



VINCENTwrist flexion

large range of movement

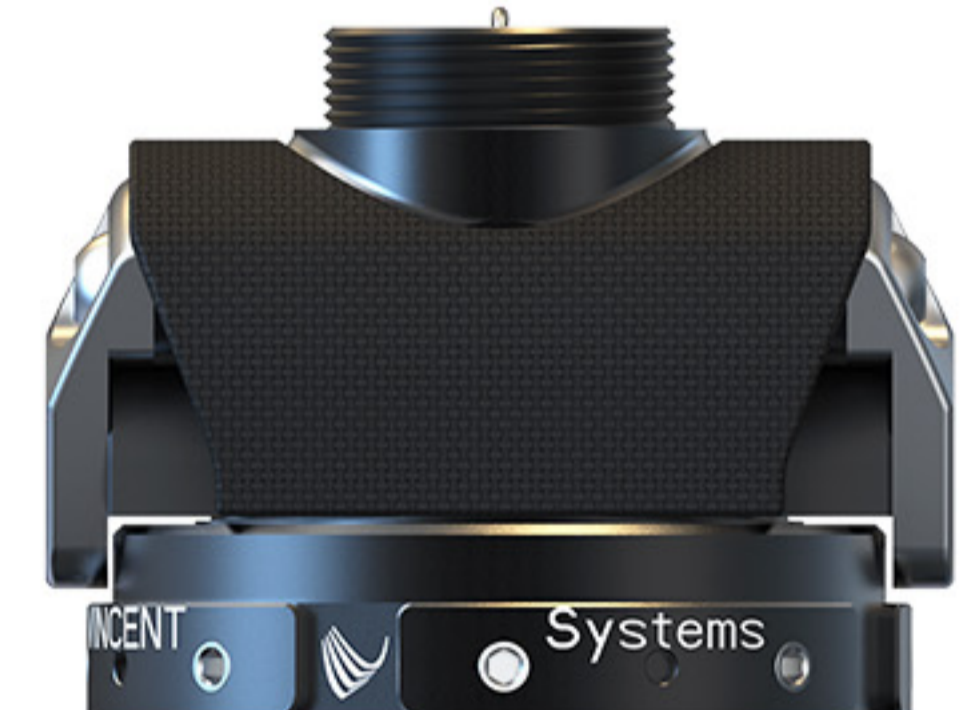
easy positioning in seven stages

**quicksnap**

**quicksnap+flexion**

**short**

**short+flexion**



noiseless rotation

uniquely short  
mounting depth



made in Germany

[www.vincentystems.de](http://www.vincentystems.de)

Phone: +49 721 16178462 (Mo to Fr 9am - 4pm CET)  
Fax: +49 721 16178463 | [info@vincentystems.de](mailto:info@vincentystems.de)

Vincent Systems GmbH | Breite Straße 155 | 76135 Karlsruhe | Germany

Copyright © Vincent Systems GmbH

standard  
extra short  
adjustable flexion



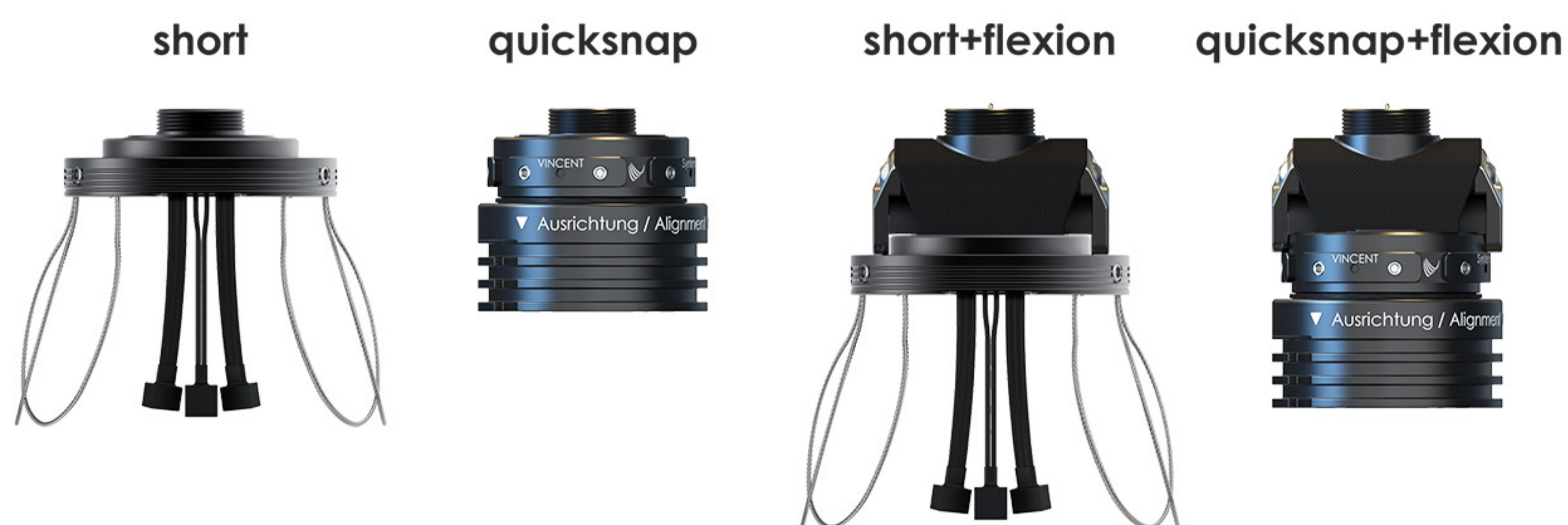
## Low weight

Due to the intelligent multi-material-mix, the wrists are particularly light and at the same time very robust and corrosion resistant.

## Short length

Our four wrist options are characterized by their low mounting depths.

## Wrist joints for adults and children



## VINCENTwrist quicksnap

The standard wrist joint makes it possible to **quickly and easily attach and remove** the hand prosthesis. The joint offers **compatibility with other systems** such as DynamicArm or Boston Digital Arm™.

## VINCENTwrist short

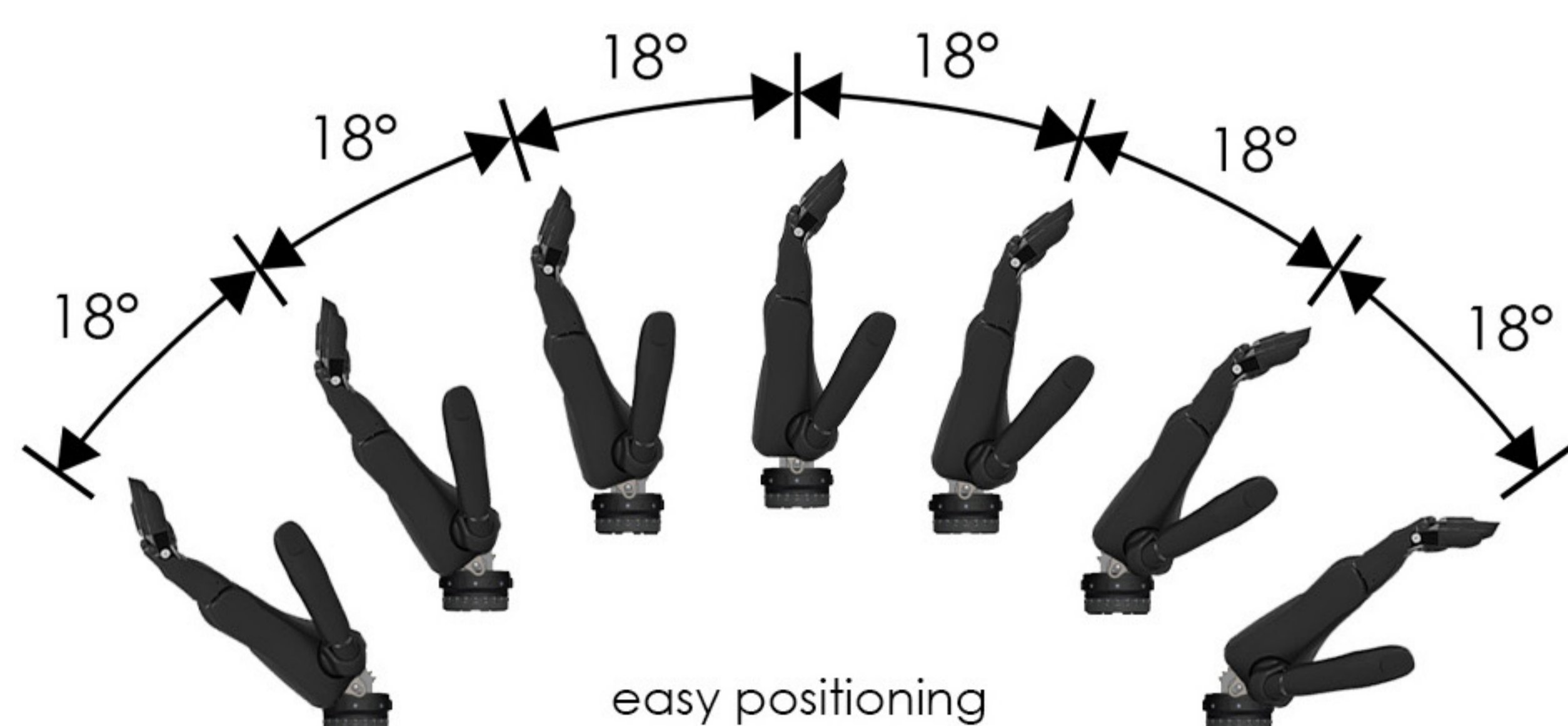
Our transcarpal joint convinces with its **uniquely low mounting depth** and is therefore also suitable for long arm stumps. In addition to the prosthesis-side joint, the shaft-side casting ring (24.7g/0.05lb) is also particularly light.

The standard wrist and the transcarpal joint can be **rotated noiselessly and gridlessly**. The **force required for rotation can be individually adjusted** for each user. Both wrists can be combined with the joint VINCENTwrist flexion that can be angled.

## VINCENTwrist flexion

The joint has a large range of movement and allows for flexion from  $-54^\circ$  to  $+54^\circ$ . It is particularly suitable for bilateral users due to its **switchless operation**.

The position is changed by pulling, moving and releasing.



wrist joint VINCENTwrist	short	quicksnap	short+flexion	quicksnap+flexion
extra weight (prosthesis) in g / lb	17 / 0.03	47 / 0.10	57 / 0.12	87 / 0.19
mounting depth in mm / "	11 / 0.43	32 / 1.25	30 / 1.18	51 / 2

